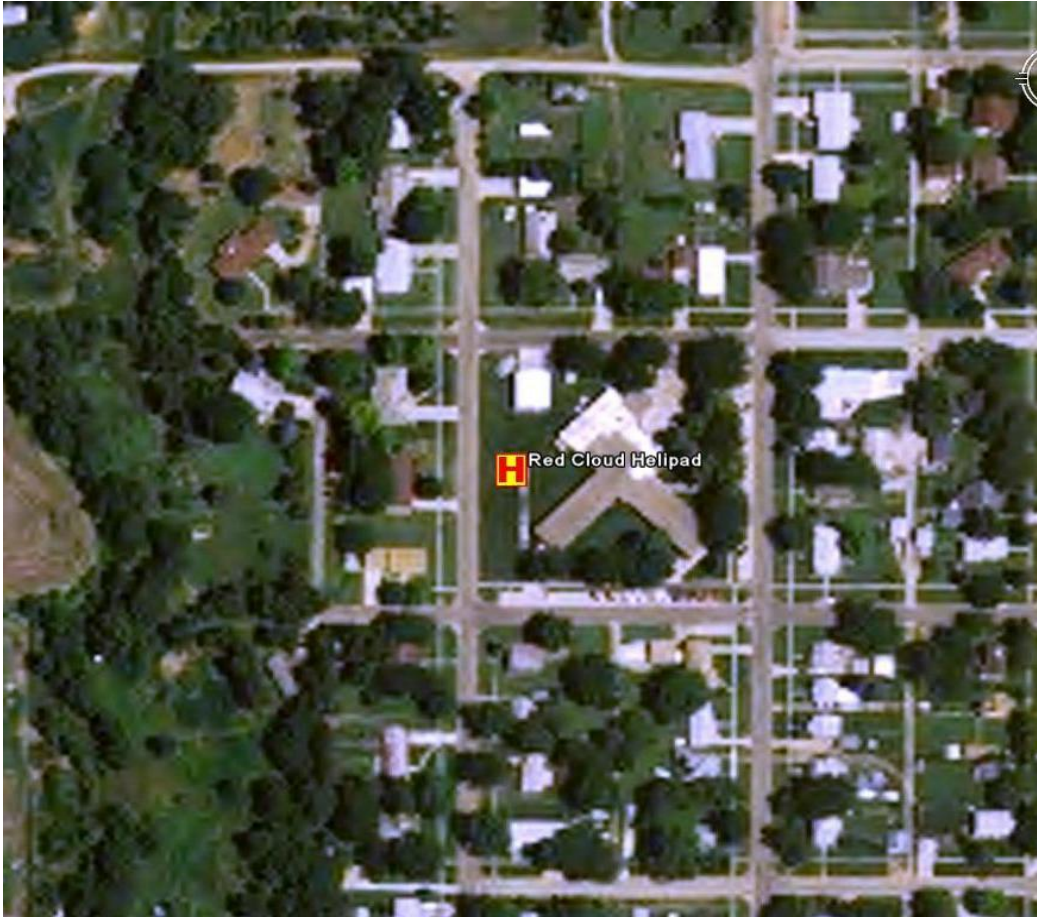


Red Cloud, Ne - Webster County Community Hospital -



LZ Info

N 40° 05.49'

W 98° 31.72'

Elevation:
1744 - Surface

Lighting:

Beacon:

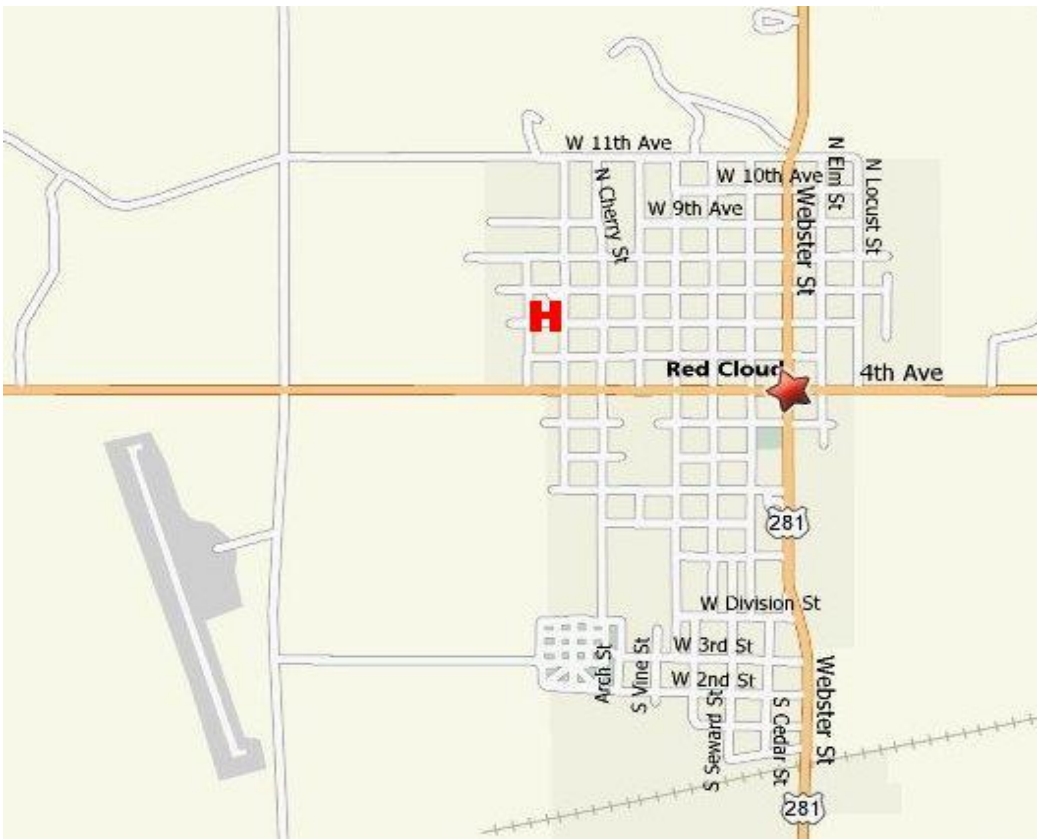
Wind Sock:

Weather:

CTAF: 122.9

Airport:
7V7 1 mi SW

Special Notes:



Facility

6th & Franklin St
Red Cloud, NE 68970

(402) 746-5600