

# Wahoo, Ne - Saunders County Hospital -



## LZ Info

**N 41° 11.57'**  
**W 096° 38.14'**  
**Elevation:**  
1240' - Surface  
**Lighting:**

**Beacon:**

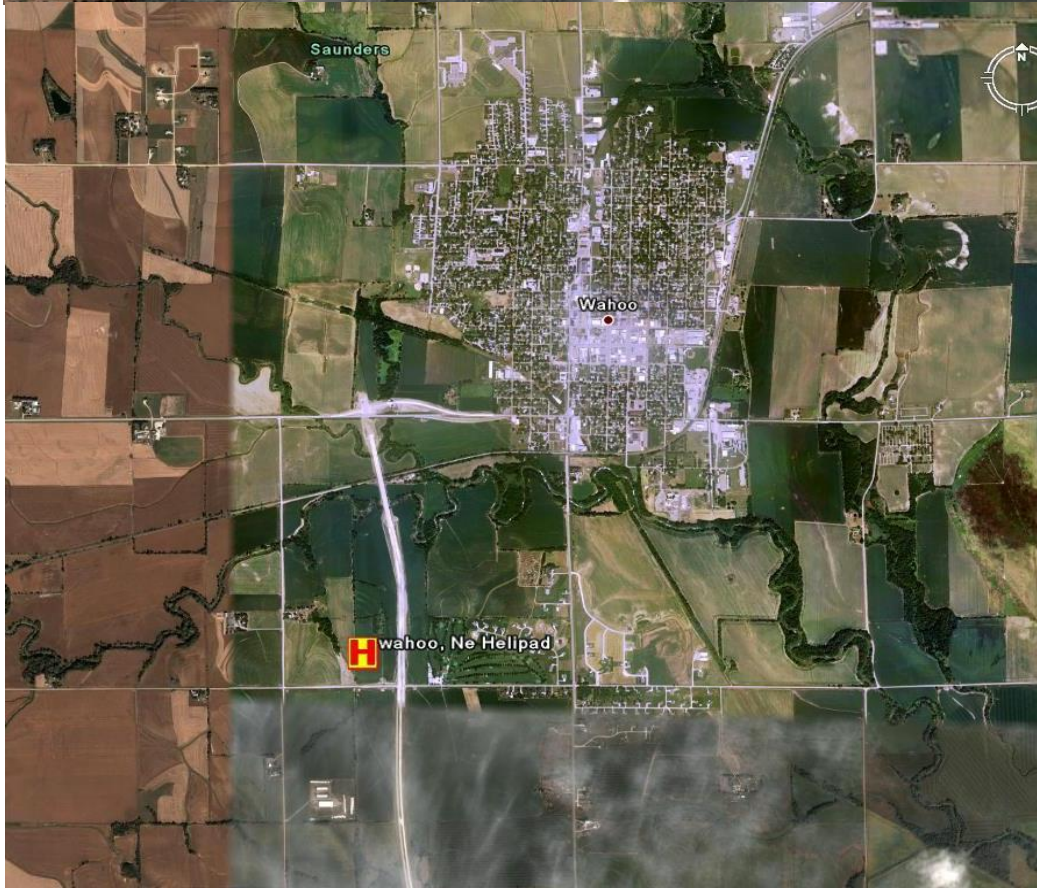
**Wind Sock:**

**Weather:**

**CTAF:** 122.7

**Airport:**  
AHQ 3nm N

**Special Notes:**  
New Hospital dark



## Facility

805 West 10th Street  
Wahoo, NE 68066

402-443-4191