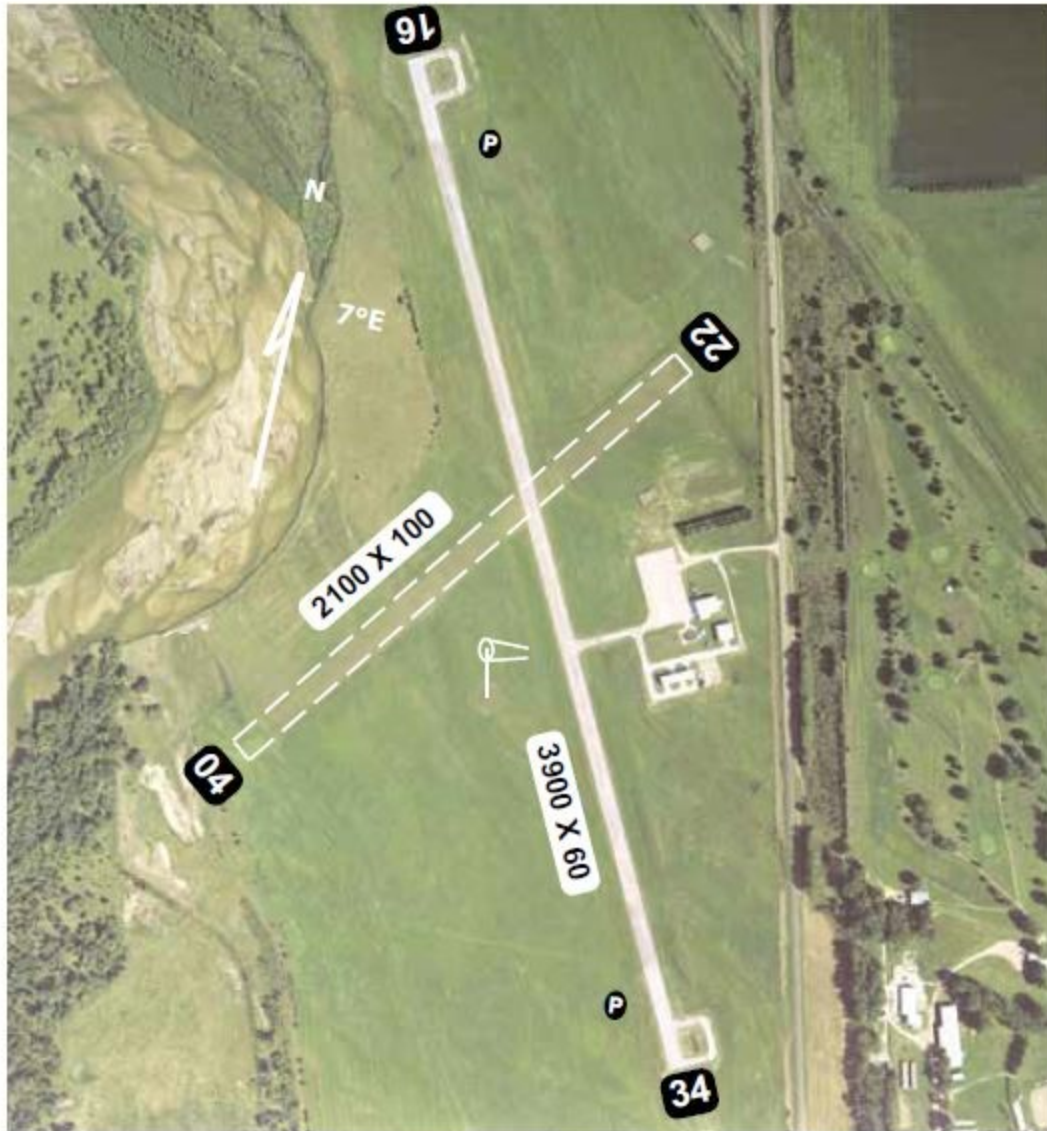


Loup City (0F4)

Elevation 2070'

AWOS/ASOS		CTAF
None		122.9



Runway	Surface	Traffic Pattern	Runway Lights
16 / 34	Concrete	1000-LH / 1000-LH	MIRL SS-SR/PCC
04 / 22	Turf	1000-LH / 1000-LH	None
Airport Manager	Mike King	308-745-1244	
FBO	None		
Fuel	100 LL Credit Card	Hours	Unattended

Loup City Municipal Airport

N 41°17.42' W 98°59.44'